

Audubon Society of Rhode Island

Environmental Education Program Guide



DISCOVER LEARN EXPLORE

- ◆ Indoor Investigations in Bristol
- ◆ Field Explorations at Audubon Wildlife Refuges
 - ◆ Teacher Resources
 - ◆ Nature Programs at Your School
- ◆ **NEW!** Information on Community Programs for Scouts, Libraries and Other Groups

For full program descriptions, links to NGSS and Foss Kits, scheduling information, discounts and scholarships, teacher training and prop box rental information, please visit

www.asri.org

Follow us:  

AT YOUR SCHOOL

*Looking for
programs on a topic that
you don't see listed?
Please ask!*

NATURE STORIES

Programs for young children include a story, activities and a live animal. Choose theme and we will do the rest. Have a favorite story? Just let us know!

Pre-K through Grade 2

30 minutes

20 children maximum

\$80 for one program,

**\$65 each additional
on the same day**

SEASONS
HABITATS
OWLS
HAWKS
INSECTS
SNAKES
TURTLES
SALAMANDERS
SEA LIFE
DINOSAURS
PLANTS &
GARDENS
ROCKS

LIFE SCIENCE PROGRAMS

One-hour classroom programs designed to support your science curriculum and align with the Next Generation Science Standards. Programs include hands-on, inquiry-based activities that are grade level appropriate. Live animals accompany all programs.

Sensory Safari: Senses, animal structures, adaptations Grades K – 2

Animal Adaptations: Seasonal changes, hibernation, migration, raising young Grades K - 2

Amazing Arthropods: Classification, invertebrates, insects, adaptations, biodiversity Level I: Grades K – 2
Level II: Grades 3 - 8

Verts: Classification, vertebrates, adaptations, biodiversity, growth & change Level I: Grades K – 2
Level II: Grades 3 - 6

All About Birds: Classification, adaptations, life cycles, migration, biodiversity Level I: Grades 1 - 2
Level II: Grades 3 - 6

Owls of RI: Senses, adaptations, habitats, food webs Level I: Grades 1 - 2
Level II: Grades 3 - 8

Birds of Prey: Adaptations, predator/prey, food webs, habitats Grades 3 – 8

Life Cycles: Simple and complex life cycles, metamorphosis Grades 2 - 5

Everything's Connected: Adaptations, food chains and food webs, ecosystems, energy flow Grades 2 - 5

Endangered Species: Habitats, human impacts on wildlife, environmental issues Grades 2 - 6

1 hour 30 students maximum

\$150 for one program, \$115 each additional on the same day



INFLATABLE WHALE AND RAPTOR ENCOUNTERS

Inflatable Whale: Mammals, whale biology and anatomy, adaptations

Level I: Grades K – 1

Level II: Grades 2 - 8

1 hour 30 students maximum \$175 for one program

\$125 each additional on the same day

An electrical outlet and 75 feet of open, indoor space is required.

Raptor Encounter: Adaptations, behaviors, predator, prey, habitats

Grades K - Adult

1 hour 300 people maximum \$300

A large space such as a cafeteria, gym or auditorium is required.

CHAPERONE FEES for all field trips: School staff and up to eight chaperones are FREE, \$5 for each additional adult.

*Only With
Audubon!*



Resources for Educators

Audubon is committed to helping teachers and students achieve their learning goals. Please see our website for **Professional Development opportunities, Prop Box Rentals, Bus Transportation Grants, Program Fee Assistance** and links to the **Standards**.

www.asri.org

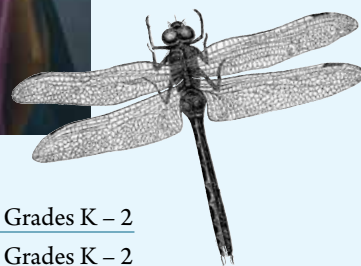
INDOOR INVESTIGATIONS

AT THE

AUDUBON ENVIRONMENTAL EDUCATION CENTER

Explore the Audubon Nature Center and Aquarium in Bristol

Indoor investigations include habitat and aquarium exhibits with hands-on, inquiry based activities that are grade level appropriate. Programs are designed to support your science curriculum and align with the Next Generation Science Standards. Perfect for winter field trips!



ONE-HOUR NATURE PROGRAMS

Owl Hour: Senses, adaptations, habitats, food webs	Grades K – 2
Life in the Tide Pool: Habitats, marine life adaptations	Grades K – 2
Whales: Classification, mammals, whale biology and anatomy	Level 1: K-2 Level II: 3 – 5

1 Hour \$8/student (\$1 discount Nov – March) \$120 minimum / 45 students maximum

TWO-HOUR NATURE PROGRAMS

Habitats: Rhode Island habitats, basic needs, food webs	Grades K – 8
Fur, Feathers and Scales: Animal structures and function, classification, adaptations, biodiversity	Grades K – 2
Animal Senses: Nocturnal adaptations, senses	Grades K – 3
Owls of Rhode Island: Senses, adaptations, predator/prey, habitat, food web	Grades 3 – 8
Whale CSI: Classification, mammals, whale biology and anatomy	Grades 6 – 12

2 Hours \$10/student (\$1 discount Nov – March) \$150 minimum / 60 students maximum

CHAPERONE FEES for all field trips: School staff and up to eight chaperones are FREE, \$5 for each additional adult.

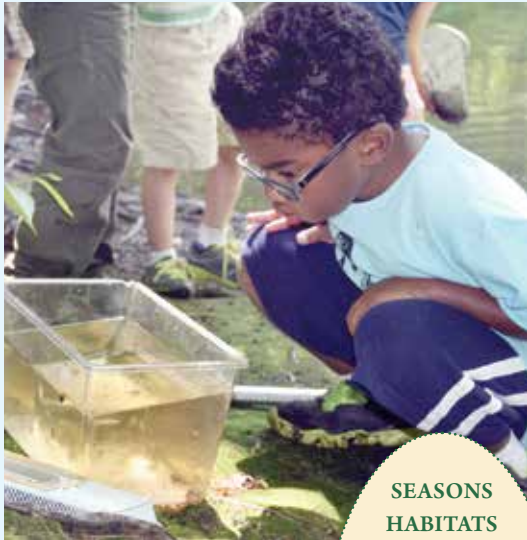


Aquarium photos courtesy of Heidi Gumula – DBVW Architects.

OUTDOOR FIELD EXPLORATIONS ON AUDUBON WILDLIFE REFUGES

Get outside! Visit one of our beautiful wildlife refuges to explore and investigate the natural world.

Field explorations are grade level appropriate and are designed to support your science curriculum and align with the Next Generation Science Standards.



ONE-HOUR FIELD EXPLORATIONS

Nature Tales & Trails

One-hour guided discovery walk with a story. Choose a theme and we will do the rest! Have a favorite story? Just let us know! (An indoor nature center exploration is an option at the Bristol location.) Grades Pre-K - 2

SEASONS
HABITATS
BIRDS
INSECTS
SNAKES
TURTLES
SALAMANDERS
DINOSAURS
SEA LIFE
PLANTS & GARDENS
ROCKS

Discovery Walks

One-hour guided nature walks include sensory activities and explorations perfect for young children. Let us know if you would like us to focus on a specific theme. Grades Pre-K - 2

Bristol, Smithfield, Seekonk or Exeter Locations

1 Hour \$8/student \$120 minimum



TWO-HOUR FIELD EXPLORATIONS

Nature Detectives: Senses, plants and animals, habitats.
Bristol, Smithfield, Seekonk and Exeter

Grade 1 – 5

Field Ecology: Habitats, food webs, ecosystems, biodiversity.
Bristol

Grades K – 8

Field & Forest Ecology: Habitats, food webs, ecosystems, biodiversity.
Smithfield, Seekonk, Exeter

Grades 5 – 12

Coastal Explorations: Marine life, saltwater habitats, tides.
Bristol

Level I: Grades 1– 5

Level II: Grades 6 – 12



Life in the Wetland: Wetland habitats, plants and animals, classification, water quality.
Bristol, Smithfield

Level I: Grades 1– 5

Level II: Grades 6 – 9

Pond & Stream Ecology: Wetland habitats, plants and animals, classification, biodiversity, water quality.
Seekonk, Exeter

Level I: Grades 2 – 5

Level II: Grades 6 – 12

Field Geology: Rocks & minerals, rock cycle, soils, glaciers, erosion, human land use.
Smithfield, Seekonk

Grades 3 – 8

Nature & Native Americans: Pre-colonial Native American life, natural resources.
Bristol

Grades 2 – 5

2 Hours \$10/student \$150 minimum



NATIVE AMERICAN AND MAPLE SUGARING PROGRAMS

Wilderness Skills: Survival skills, team building, maps & compass, plant & animal ID.
Smithfield, Seekonk, Exeter

Grades 4 – 8

3 Hours \$11/student \$165 minimum

Wigwam Ways: Pre-colonial Native American life, natural resources.
Seekonk

Grades 2 - 6

3 Hours \$11/student \$165 minimum

NEW! Maple Sugaring Ecology & Culture: February-early April only.
Seekonk

Grades 3 - 8

2 Hours \$10/student \$150 minimum

*Only With
Audubon!*

CHAPERONE FEES for all field trips: School staff and up to eight chaperones are FREE, \$5 for each additional adult.

COMMUNITY GROUPS

*Looking for a unique experience related to the natural world?
Audubon offers nature discovery programs for scout troops, libraries, senior centers and other community groups. Programs are developed to best meet each group's needs and schedule.*



Consulting

Audubon naturalists help individuals, schools and groups improve their outdoor spaces. Do you need help with gardening and landscaping for wildlife, nature trail development, or invasive species identification? Give Audubon a call!

\$100/hour + mileage

Scouts

Audubon naturalists mentor Girl Scouts and Boy Scouts working on badges related to natural history and life science. Ask how we can help fulfill your troop's badge requirements. (Prospective Gold Award Girl Scout and Eagle Scout projects are also considered on an individual basis.)

Bristol, Smithfield, Seekonk and Exeter

2 hours \$10/Scout \$100 minimum 3 adults free \$5/extra adult

Longer programs are an additional \$5/hour/Scout

Trail Adventures

An Audubon naturalist will guide your group along our wildlife refuge trails. Explore what's happening in nature each season. Follow deer tracks in the snow... listen to the spring chorus of frogs... witness baby birds learning to fly... and so much more. Have a topic in mind? Just let us know!

Bristol, Smithfield, Seekonk, Exeter and other Audubon refuges upon request. **2 hours \$10/person \$150 minimum**

Nature At Your Site

Audubon brings high quality natural history programming to recreation centers, libraries, senior living communities and other sites. Turn to Audubon if you need a speaker for an adult event, are looking for an animal encounter for children or want a bird walk led in your park. We tailor programs for each audience.

Raptor Programs: These popular programs include an informative presentation on these amazing birds and a live owl or hawk visit.

Animal

Interviews: Live animals engage audiences of all age levels. Choose from a snake, turtle, salamander, insect or bird of prey.



Natural History Talks: Our naturalists have a wealth of knowledge on everything from mushrooms to birds to composting and gardening. Let Audubon know if you have a specific topic in mind.

Guided Walks: Want to learn more about the wildflowers, birds or the general natural history at your site? Ask Audubon!

**1 hour \$150 for one program,
\$115 each additional program on the same day**

Public Programs

*Audubon also offers a host of programs open to the public. See our latest **Nature Tours and Programs Guide** for more information. Download a copy at*

www.asri.org.



Audubon Society of Rhode Island
12 Sanderson Rd.
Smithfield, RI 02917

Please follow us!



DISCOVER

LEARN

EXPLORE

Audubon Society of Rhode Island
Environmental Education Program Guide
for Schools, Educators and Community Groups



www.asri.org
401-949-5454

